



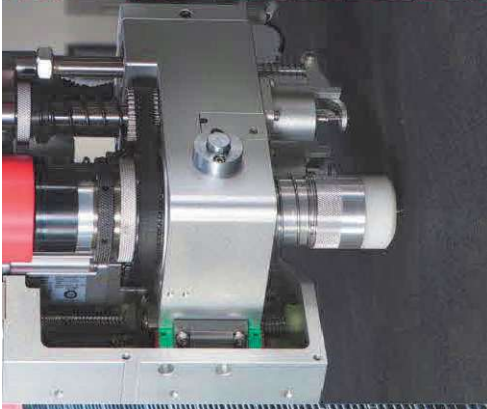
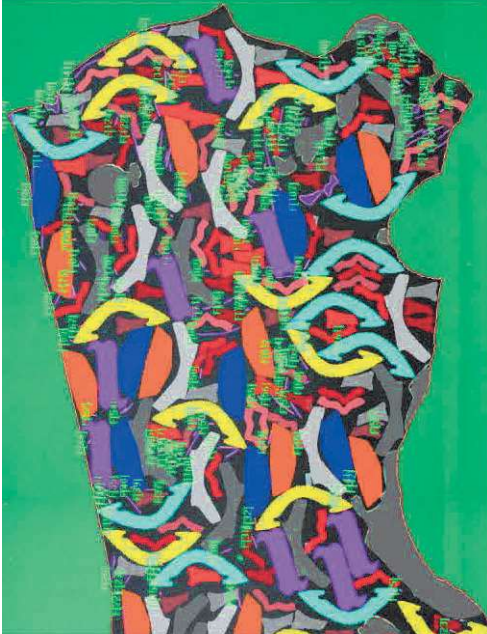
切入未来 / Cutting Edge for Tomorrow

# 数字裁剪中心

## DIGITAL CUTTING CENTER

「制鞋行业」一站式智能裁剪+创新工艺解决方案

Footwear Industry One-stop Intelligent Cutting & Innovative Process Solutions



## 目录 CONTENTS

---

01 数字切割系统  
Digital cutting system

02 智能喷线(画线)系统  
Intelligent spray line (drawing line) system

---

03 数字激光切割系统  
Digital laser cutting system

04 机械手臂应用  
Robotic Arm Applications

---

05 投资回报率  
ROI

06 IoT 桥  
IoT Bridge

---

07 本地化服务  
Localization services

---

## 规则材料多层切割

适合TPU、PU、网布、港宝等

### Regular material multi-layer cutting.

Suitable for TPU, PU, mesh fabric, counter, etc.

**1040,000片**

月度产能/台 (10小时\*26天)

Monthly capacity per unit (10 hours \* 26 days).

**3-4倍**

效能提升(抵传统工艺设备3-4台)

Efficiency improvement (equivalent to 3-4 traditional machines).



### 匠心智造·加倍保固

INTELLIGENT MANUFACTURING WITH CRAFTSMANSHIP·DOUBLE GUARANTEE

20年设计使用年限

20years Design serviceable lifespan



铸件一体成型

One-piece casting



VC9-1670T/N

龙门式智能震动刀切割机

Gantry intelligent vibrating knife cutting machine



VC9-1660T

全球品质  
Global Quality



视频 Video

由于材料种类和操作人员熟练程度的差异，切割产能可能会有所不同。因此，所提供的产能数据仅供参考，不作为最终依据。  
Due to variations in material types and operator skills, cutting capacity may differ. Therefore, the provided capacity data is for reference only and should not be considered as definitive.

**AI 智能视觉识别**  
识别精度更高(83 pixels/mm<sup>2</sup>),范围更广

**AI intelligent vision recognition.**

Higher recognition accuracy (83pixels/mm<sup>2</sup>), wider range.

**78,000片**  
月度产能/台 (10小时\*26天)  
Monthly capacity per unit (10 hours \* 26 days).

**3-4倍**  
效能提升(抵传统工艺设备3-4台)  
Efficiency improvement (equivalent to 3-4 traditional machines).

具备普通规则材料切割的全部功能  
Has all the functions of ordinary regular material cutting.



**VC9-1670T/N-4SCCD**  
SOKC 超级智能裁剪  
SOKC (Super Intelligent Cutting)



**4个高清工业相机**  
4 HD industrial cameras



**全: 二次改刀, 切割精度±0.2mm**  
Full: secondary reamer, cutting accuracy±0.2mm



**效率更高: 300片/时**  
Higher efficiency: 300 pieces/hour

## 真皮解决方案

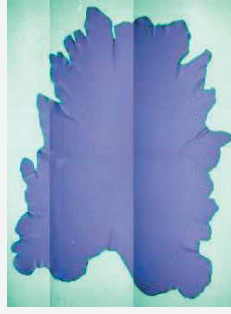
高效、快捷、省料

### Leather solution

Efficient, fast, material-saving.

全皮智能排版+切割

Full leather intelligent nesting & cutting.



ITS3-3012

+超级服务器 (Super Server) \*1



KC1660TTX2-4P \*2-3

超大幅面智能震动刀切割机

(Oscillating knife cutter with super large format and AI capabilities)

全皮智能排版+切割

Semi-leather intelligent nesting & cutting.



ITS3-3012

+超级服务器 (Super Server) \*1



KC1630TT-RT-3P \*3-4

真皮数码切割机 (Leather digital cutter)

**936,000片**

月度产能/台 (10小时\*26天)

Monthly capacity per unit (10 hours \* 26 days).

**3-4倍**

效能提升 (抵传统工艺设备3-4台)

Efficiency improvement (equivalent to 3-4 traditional machines).

由于材料种类和操作人员差异，切割产能可能会有所不同。因此，所提供的产能数据仅供参考，不作为最终依据。

Due to variations in material types and operator skills, cutting capacity may differ. Therefore, the provided capacity data is for reference only and should not be considered as definitive.

## 裁片二次外斩(改刀)

100%免刀模、数据化、成熟度

The second external cutting of the piece (modified)

100% die free, digitalization, Maturity

**130,000片**

月度产能/台 (10小时\*26天)

Monthly capacity per unit (10 hours \* 26 days).

**2-3倍**

效能提升(抵传统工艺设备2-3台)

Efficiency improvement (equivalent to 2-3 traditional machines).



**GC850SCCD-P-EP**

一体便捷式移动震动刀切割机

Integrated portable oscillating knife cutting machine



### CCD摄像定位

CCD camera positioning

针对小面积，精度高、小孔材料等定位切割  
For small area, high precision, small hole material, etc, positioning cutting



### 投影预览定位

Projection preview positioning

针对变形、立体材料定位切割  
Positioning and cutting for deformed and three-dimensional materials.



### SCDD摄像定位

SCDD camera positioning

针对大面积材料定位切割  
Positioning and cutting for large-area materials



视频 Video

由于材料种类和操作人员差异，切割产能可能会有所不同。因此，所提供的产能数据仅供参考，不作为最终依据。  
Due to variations in material types and operator skills, cutting capacity may differ. Therefore, the provided capacity data is for reference only and should not be considered as definitive.

## 泡棉、内衬材料 多层切割

最大切割厚度5cm

Multi-layer cutting of  
foam and lining materials  
Maximum cutting thickness  
of 5cm

**208,000-260,000片**  
月度产能/台 (10小时\*26天)  
Monthly capacity per unit (10 hours \* 26 days).

**3-4倍**  
效能提升(抵传统工艺设备3-4台)  
Efficiency improvement (equivalent to 3-4  
traditional machines).



## ● 印线、画线解决方案 比更快

Line printing, line  
drawing solutions  
Faster than fast

<p><b>IP-GH1280-AT-2SCCD</b> 智能喷线系统 (工业墨盒) Intelligent Line Spraying System (Industrial Cartridges)</p>	<p><b>LA-GN1280TT-AT-SCCD</b> 针筒式划线机 Syringe Scribing Machine</p>	<p><b>SP-GH1280-AT-SCCD</b> 墨盒式划线机 Cartridge Scribing Machine</p>
<p><b>SCCD视觉识别</b> SCCD visual recognition</p>	<p><b>一键自动生成模板</b> One-key automatic template generation</p>	<p><b>多部件随意摆放</b> Place multiple parts</p>
<p><b>自动送料系统</b> Automatic feeding system</p>		

**234,000片**  
月度产能/台 (10小时\*26天)  
Monthly capacity per unit (10 hours \* 26 days).

**3-6倍**  
效能提升(抵传统工艺设备3-6台)  
Efficiency improvement (equivalent to 3-6 traditional machines).

由于材料种类和操作人员熟练程度的差异, 切割产能可能会有所不同。因此, 所提供的产能数据仅供参考, 不作为最终依据。  
Due to variations in material types and operator skills, cutting capacity may differ. Therefore, the provided capacity data is for reference only and should not be considered as definitive.

## 激光解决方案

高效率、高精度、高稳定性

### Laser solutions

High efficiency, high precision, high stability

 <p><b>GH1660TT-AT-3SCCD-P</b> 双头异步高效激光切割机 Double-head Asynchronous High-efficiency Laser Cutting Machine</p>	 <p><b>GH1570F-AT</b> 投影定位四头光切割机 Projector positioning four-head laser cutting machine</p>	 <p><b>XXP3.1-180-CCD</b> 视觉识别高速打标机 VisionScan high speed laser marking machine</p>
 <p><b>片装改刀</b> Sheet material modify cutting</p>	 <p><b>自动识别打挂钉空</b> Automatic identification of pin hole</p>	 <p><b>鞋底打标</b> Shoe sole marking</p>
 <p><b>投影预览定位, 排版效果即时预览</b> Projection preview positioning, instant preview of layout effects</p>		

(切割机 Cutter)

(打标机 Marking machine)

**78,000-468,000片**

月度产能/台 (10小时\*26天)

Monthly capacity per unit (10 hours \* 26 days).

**3-6倍**

效能提升(抵传统工艺设备3-6台)

Efficiency improvement (equivalent to 3-6 traditional machines).

由于材料种类和操作人员差异, 切割产能可能会有所不同。因此, 所提供的产能数据仅供参考, 不作为最终依据。


Due to variations in material types and operator skills, cutting capacity may differ. Therefore, the provided capacity data is for reference only and should not be considered as definitive.

## 全自动智能喷胶


自动生成喷胶路径，  
无需编辑喷胶轨迹

### Automatic intelligent glue spraying


Glue spraying path  
generated automatically  
without editing.



**R3**  
全自动智能喷胶机  
Robot spraying system



**R4**  
全自动智能刷胶机  
Robot brushing system



**3D扫描自动生成路径，精度达±0.1mm**  
3D scanning and glue spraying path generated automatically at high precision of ±0.1mm

**多种颜色均可识别**  
Any sole color can be recognized

**自动计数、分左右胶**  
Automatic counting and separated on left and right side

**78,000片**  
月度产能/台 (10小时\*26天)  
Monthly capacity per unit (10 hours \* 26 days).

**5倍**  
效能提升(抵传统工艺设备5台)  
Efficiency improvement (equivalent to 5 traditional machines).

由于材料种类和操作人员差异，切割产能可能会有所不同。因此，所提供的产能数据仅供参考，不作为最终依据。  
Due to variations in material types and operator skills, cutting capacity may differ. Therefore, the provided capacity data is for reference only and should not be considered as definitive.

投资回报率 ROI



## ROI优势 • ROI Advantage.

GBOS所有智能装备的研发初心都是基于投资回报率小于2.5年而研发  
The initial development of all GBOS smart equipment is based on a return on investment of less than 2.5 years.

保障用户不会因重复购买设备，而增加不必要的成本  
ensure that users will not increase unnecessary costs due to repeated purchases of equipment.



### ROI ≤ 2.5年 (YEARS)

20年持久耐用，轻松升级。  
Built to Last 20 Years, Easy to Upgrade.

**定义标准  
开放共赢**  
为智能制造4.0赋能

**Define standards,  
open up for win-win  
empower Industry 4.0**

**支持多种不同数据格式  
同时交互**

Support multiple different  
data formats to interact at  
the same time

**IoT 功能项**  
Functional item

**综合效率**  
Combined efficiency

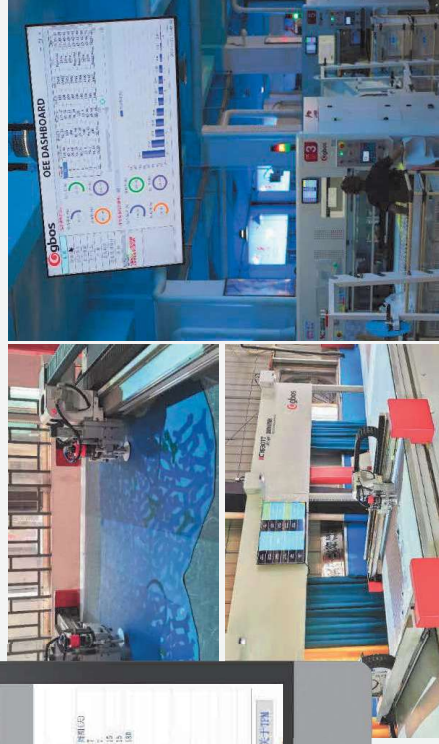
**生产信息**  
Production Information

**设备状态**  
Device status

**设备使用明细**  
Breakdown of usage

**查询/帮助**  
Enquiry/Help

**TPM**  
TPM



售后 After-sales



# 全球 本地化服务

## Global Global localization services

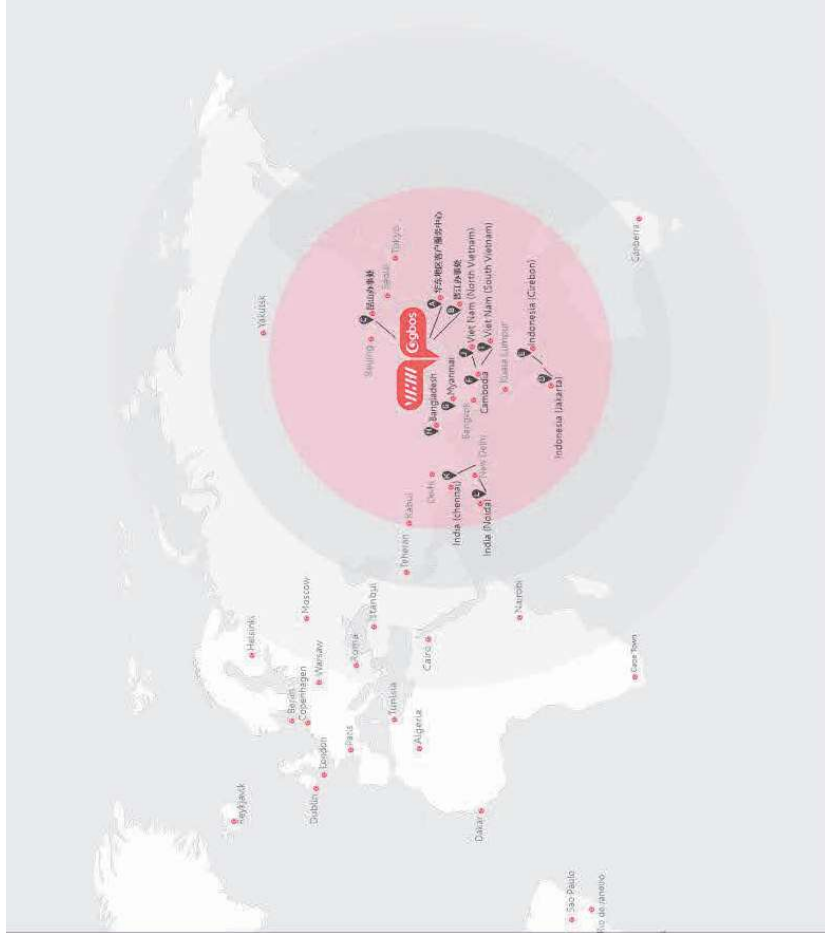
**光博士中国**  
GBOS China

- 光博士研发、制造总部 (HQ)  
GBOS R&D center / Production base (HQ)
- 光博士江西生产基地 (GCJ)  
GBOS Production Base (GCJ)
- 光博士福建4S办事处 (GCF)  
GBOS 4S FUJIAN (GCF)
- 光博士温州4S办事处 (GCW)  
GBOS 4S WENZHOU (GCW)

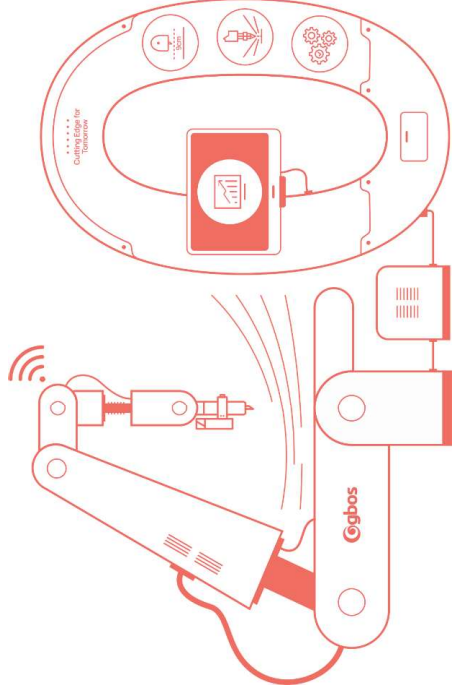
**光博士全球**  
GBOS Global

- 印尼办事处 (井里汶GGI、雅加达GGIN)  
Indonesia Office (GGI Cirebon, GGIN Jakarta)
- 越南4S办事处 (南越GGV、北越GGVI)  
4S Office in Vietnam (GGV South Vietnam, GGVI North Vietnam)
- 孟加拉3S办事处 (GGB)  
3S Bangladesh Office (GGB)
- 柬埔寨3S办事处 (GCC)  
Cambodia 3S Office (GCC)

4S: 销售、售后、配件、设备展示  
 4S: Sales, after-sales, accessories, equipment display  
 3S: 销售、售后、配件  
 3S: Sales, after-sales, accessories



切入未来  
Cutting Edge for Tomorrow



精益智造4.0  
Lean Intelligent Manufacturing

东莞市光博士激光科技股份有限公司  
GBOS LASER INC.

江西生产基地: 江西微驰自动化科技有限公司  
Production Base: VCHI AUTOMATION INC.

中国、港澳台地区及全球华语客户  
Chinese, Hong Kong, Macao, Taiwan regions & Global  
Chinese clients

+86-769-89972888 ✉ chn@gboslaser.com

海外客户  
Overseas Market  
+86-769-88990609 ✉ gbos@gboslaser.com

CN [www.gboslaser.cn](http://www.gboslaser.cn)  
EN [www.gboslaser.com](http://www.gboslaser.com)  
OKC [www.gboscutter.com](http://www.gboscutter.com)